



**GTV**

# VELLO HANDLELESS SYSTEM

# VELLO

The minimalist trend in furniture has been visible for many seasons. It helps to clear our minds and it's far from being overwhelming.

To meet emerging needs, we created the VELLO system, which allows you to build a completely handle-free kitchen.

Thanks to VELLO horizontal bars, we can illuminate the contents of drawers and all cabinets located directly underneath the profile. Thanks to this function, we can achieve a fully illuminated usable space.

Vello bars can be mounted both to the inner sides of a cabinet body or to partitions inside where milling is needed. As an additional option, milling is possible on the side panels of the cabinet body, in which case we offer aesthetic closing caps. Made of high-quality aluminium, Vello profiles are available in the length of 3000 mm. The product can be cut to any desired length. When creating a handleless kitchen with smooth cabinet fronts, we mustn't forget about a crown profile mounted on cabinets above the countertop as a source of lighting and an invisible handle. By gently illuminating a countertop or sink, it is a very practical addition to the kitchen.



**VELLO** to zestaw poziomych i pionowych listew dostępnych w czterech wzorach i czterech najmodniejszych kolorach: bieli, czerni, stali szczerkowanej i aluminium. Za ich pomocą można zbudować szuflady i szafki bezuchwytowe, uzyskując jednolitą, gładką linię frontu mebla.

# VELLO










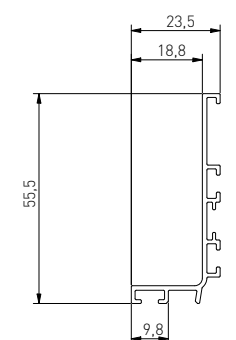
Recommended **PA-OSMLGLAXMIC3M-00N**  
– micro cover for LED profile.

## Horizontal L – profile

The profile is mounted directly under a countertop. LED profile allows for lighting the interior of upper drawers and cabinets underneath the profile.

### profiles

 C mm		 L mm							
cut	3000	aluminium	brushed steel	white	black matt	aluminium	12		
		PA-VELLO-L3M-05	PA-VELLO-L3M-06	PA-VELLO-L3M-10	PA-VELLO-L3M-20M				











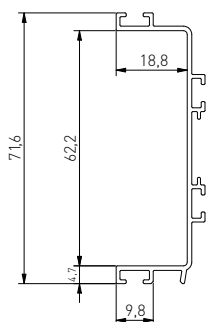
Recommended **PA-OSMLGLAXMIC3M-00N**  
– micro cover for LED profile.

## Horizontal C – profile

Perfect to mount between two drawers, giving the ability to open the drawers from above or below.  
Thanks to the LED function, you can illuminate the inside of the drawer which is underneath the profile.

profile

 C (mm)	 L (mm)						
cut	3000	aluminium	brushed steel	white	black matt	aluminium	12
		PA-VELLO-C3M-05	PA-VELLO-C3M-06	PA-VELLO-C3M-10	PA-VELLO-C3M-20M		





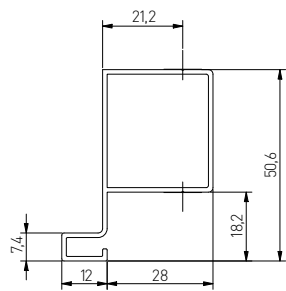
# Single vertical T – profile

A profile constructed for handleless opening of cargo type cabinets. Opens a single cabinet.



profiles

C mm	L mm						
cut	3000	aluminium	brushed steel	white	black matt	aluminium	8
		PA-VELLO-TJ3M-05	PA-VELLO-TJ3M-06	PA-VELLO-TJ3M-10	PA-VELLO-TJ3M-20M		



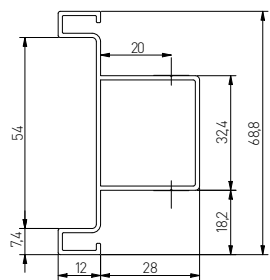
# Double vertical T – profile

A profile constructed for handleless opening of cargo type cabinets. Double profile that opens two independent cabinets.



profiles

C mm	L mm						
cut	3000	aluminium	brushed steel	white	black matt	aluminium	8
		PA-VELLO-TD3M-05	PA-VELLO-TD3M-06	PA-VELLO-TD3M-10	PA-VELLO-TD3M-20M		









# L and C profile lighting



5 mm LED tape from the GTV offer (indexes below) can be used with the C- and L-profiles. It is advisable to mount the LED tape with a PA-OSMLGLAXM3M-00 3 m milk micro cover.

			
LD-2835-600-5MM-20-ZB	12 VDC 6,6 Wm	750 lm/m	● 6500 K
LD-2835-600-5MM-20-NE4			● 4000 K
LD-2835-600-5MM-20-CB			● 3200 K

## Complementary products - switches:



AE-WBBUNI-10DIM



AE-WBCUNI-10DIM



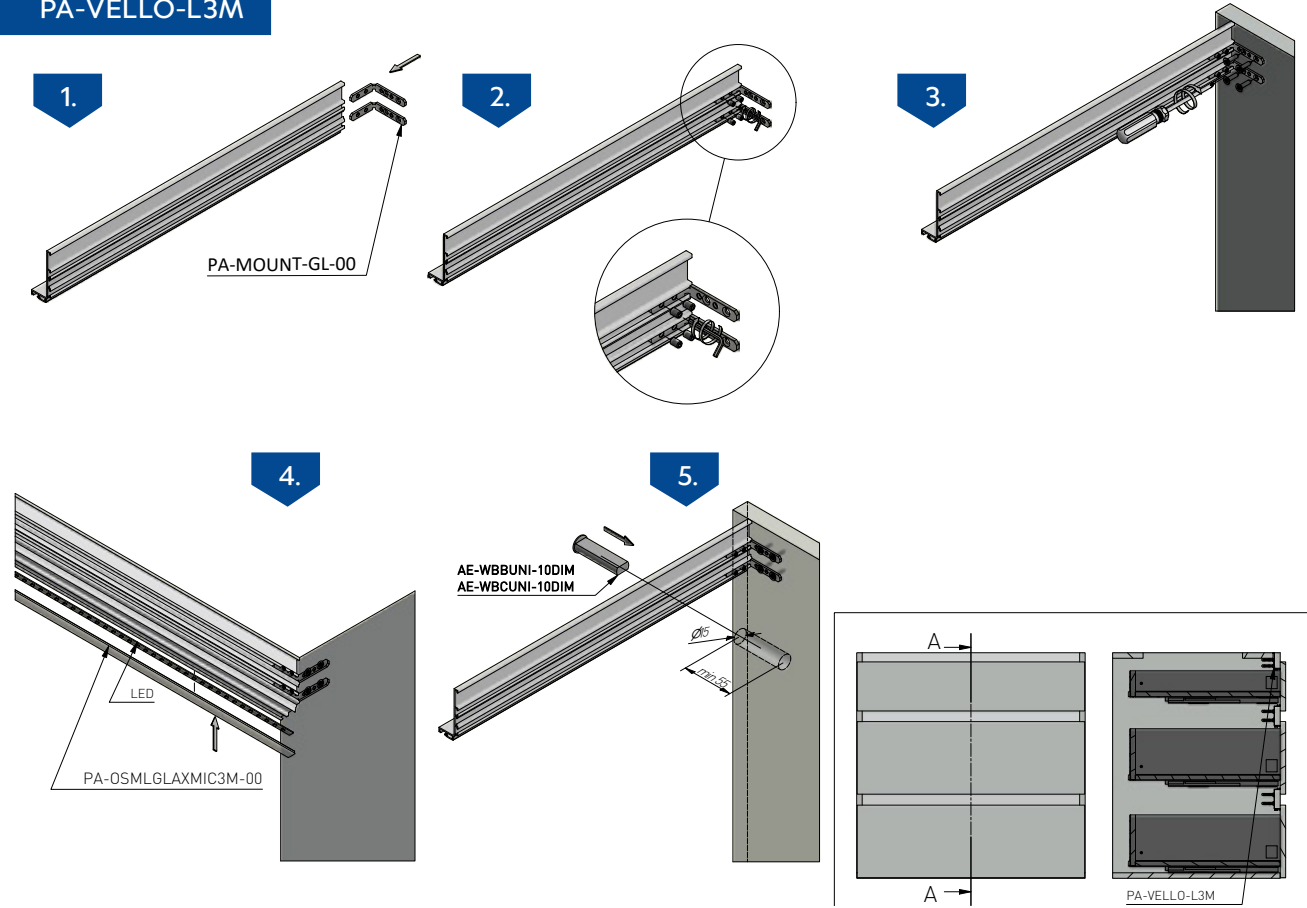
AE-WBEZDB-10S



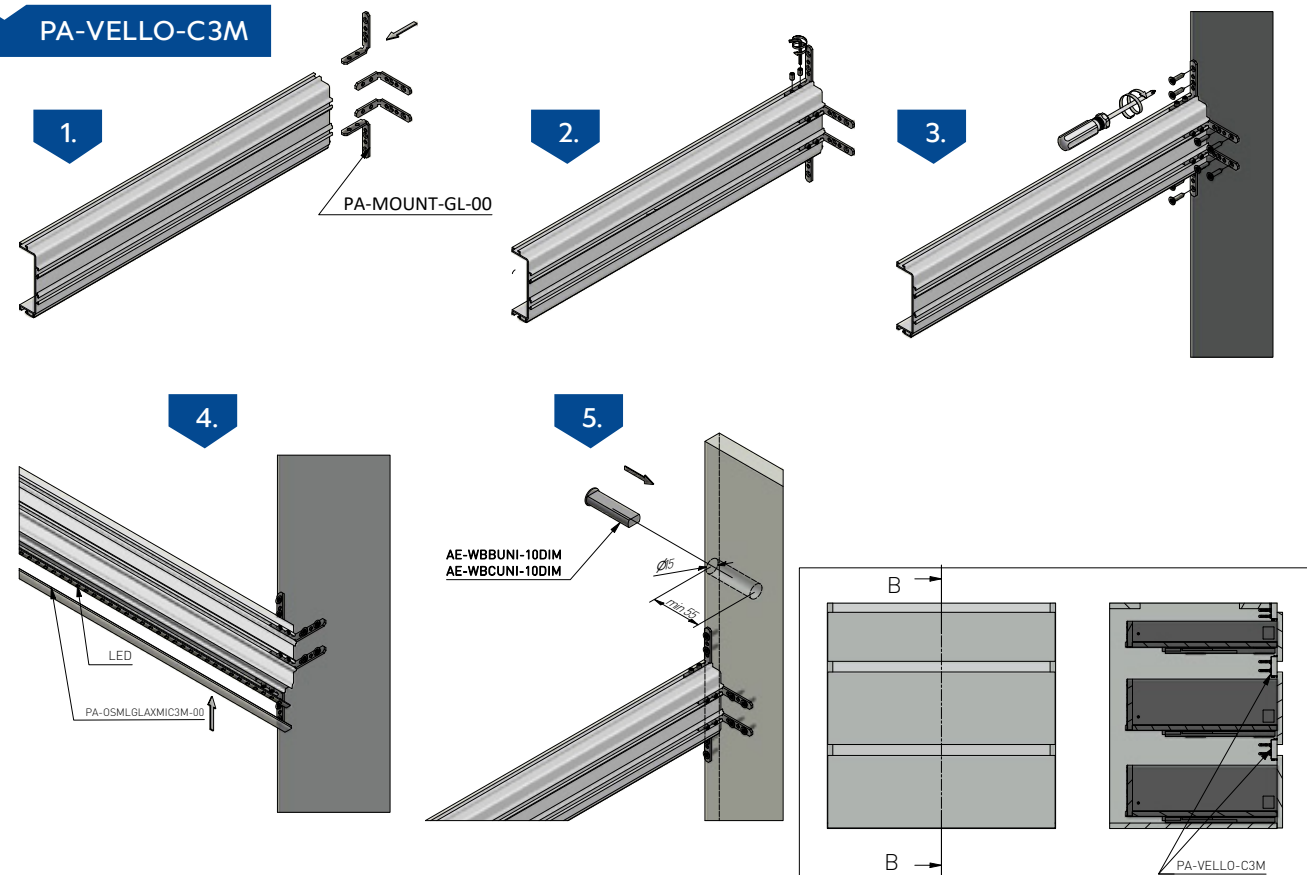
AE-WBEZDC-10S

The figure below shows the possibility of mounting the profiles to cabinet walls without the need for cover caps. This is an option for those who appreciate a uniform furniture surface.

### PA-VELLO-L3M



### PA-VELLO-C3M



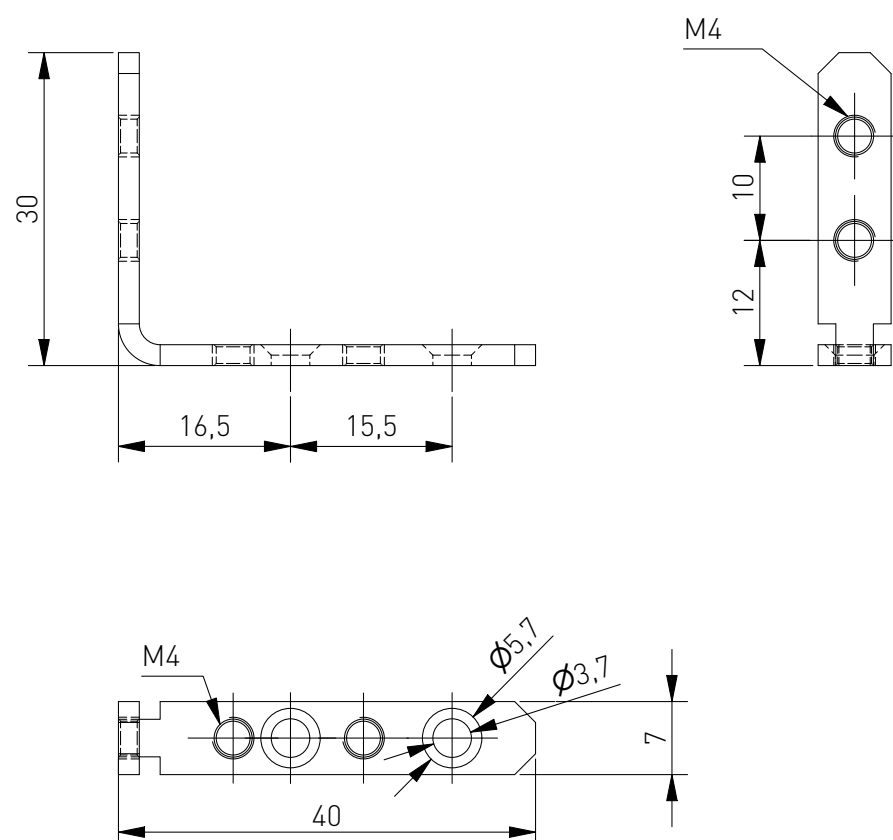
## Vello system mounting



PA-MOUNT-GL-00

The system allows mounting horizontal C and L profiles both on the inside of cabinet walls and to partitions. The mounting can also be used to join two profiles horizontally at right angles.

The set consists of 2 fasteners and 8 M4 screws (4 screws per one fixing)  
Two chamfered holes are used in order to mount the handle with screws to the furniture body panels (they are not included for fastening).  
Packing – 50 sets (2 pcs.) in one package.










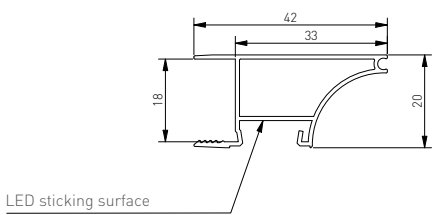
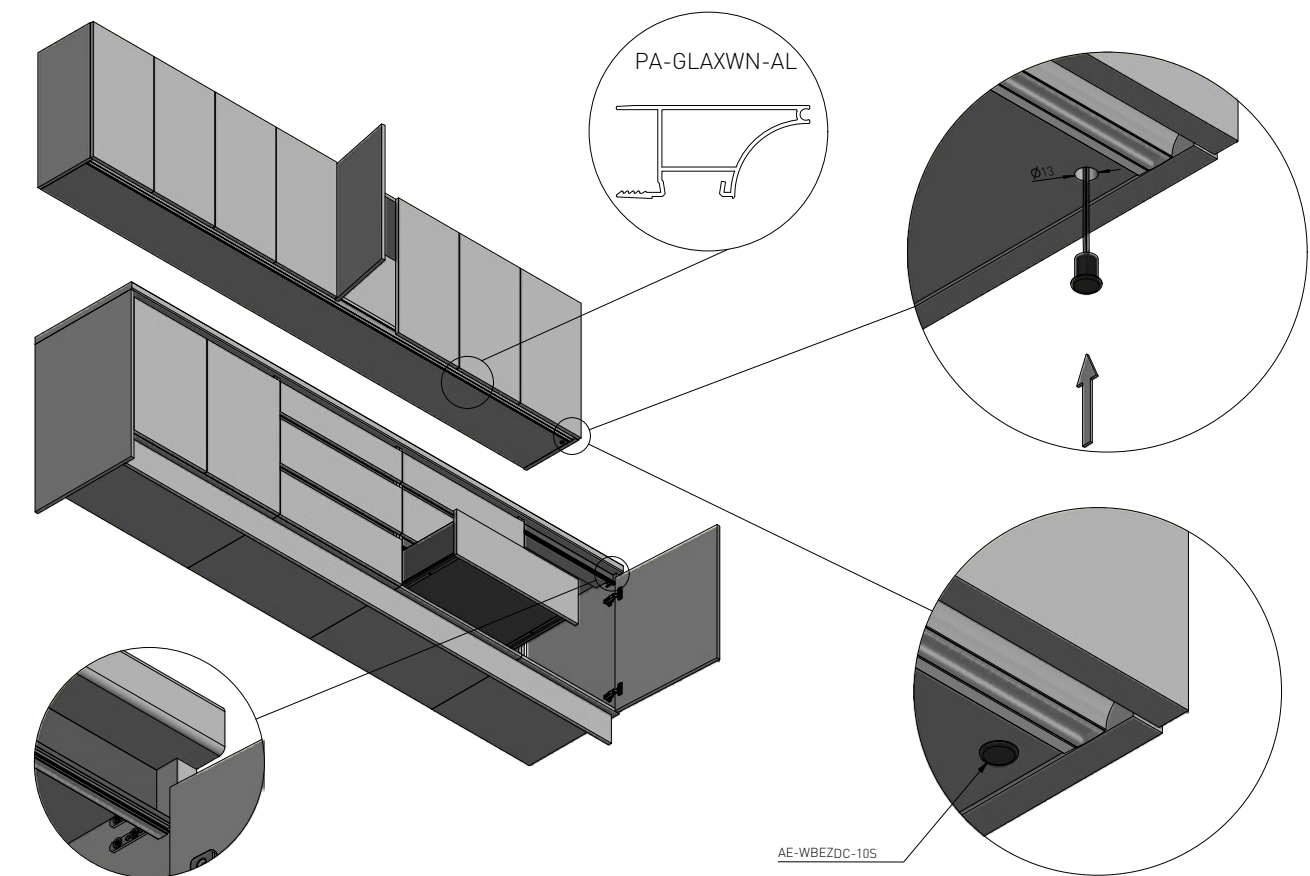
# Crown profile

A smooth cabinet line can be achieved by mounting a GLAX crown profile to the bottom edge. It is a two-in-one product that replaces the handle and illuminates the countertop at the same time.

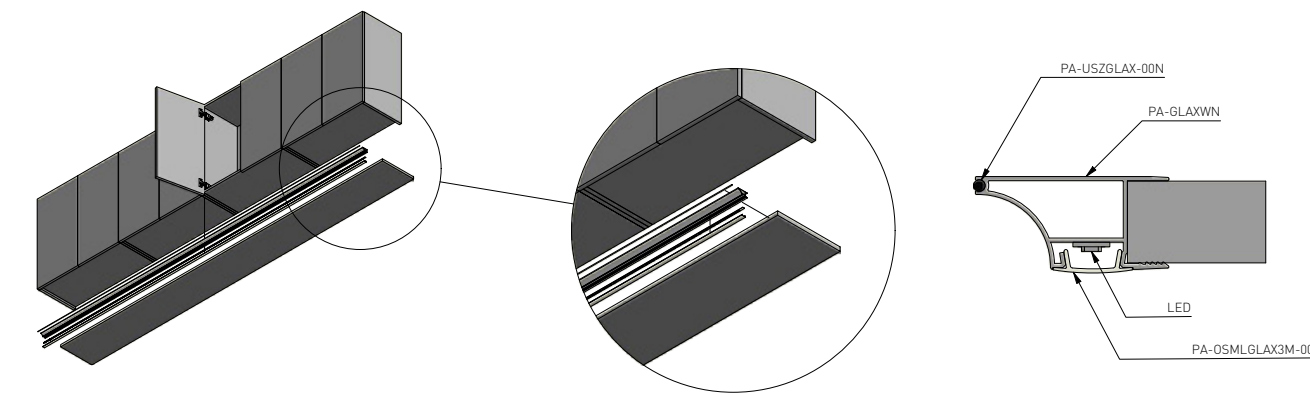


					
PA-GLAXWN-AL	18	2	profile	silver	aluminium
PA-GLAXWN3M-AL		3		black	
PA-GLAXWN3M-AL-20M				white	
PA-GLAXWN3M-AL-10				inox	
PA-GLAXWN3M-AL-06					
PA-OSMLGLAX-00	–	2	cover	frosted	PC
PA-OSTRGLAX-00		3		transparent	
PA-OSMLGLAX3M-00	–			frosted	
PA-OSTRGLAX3M-00	–			transparent	
PA-USZGLAX-00N	–	10	cord gasket	black	EPDM
PA-USZGLAX-10N	–			white	

Any GTV Lighting tape with a cover can be used for the profile.

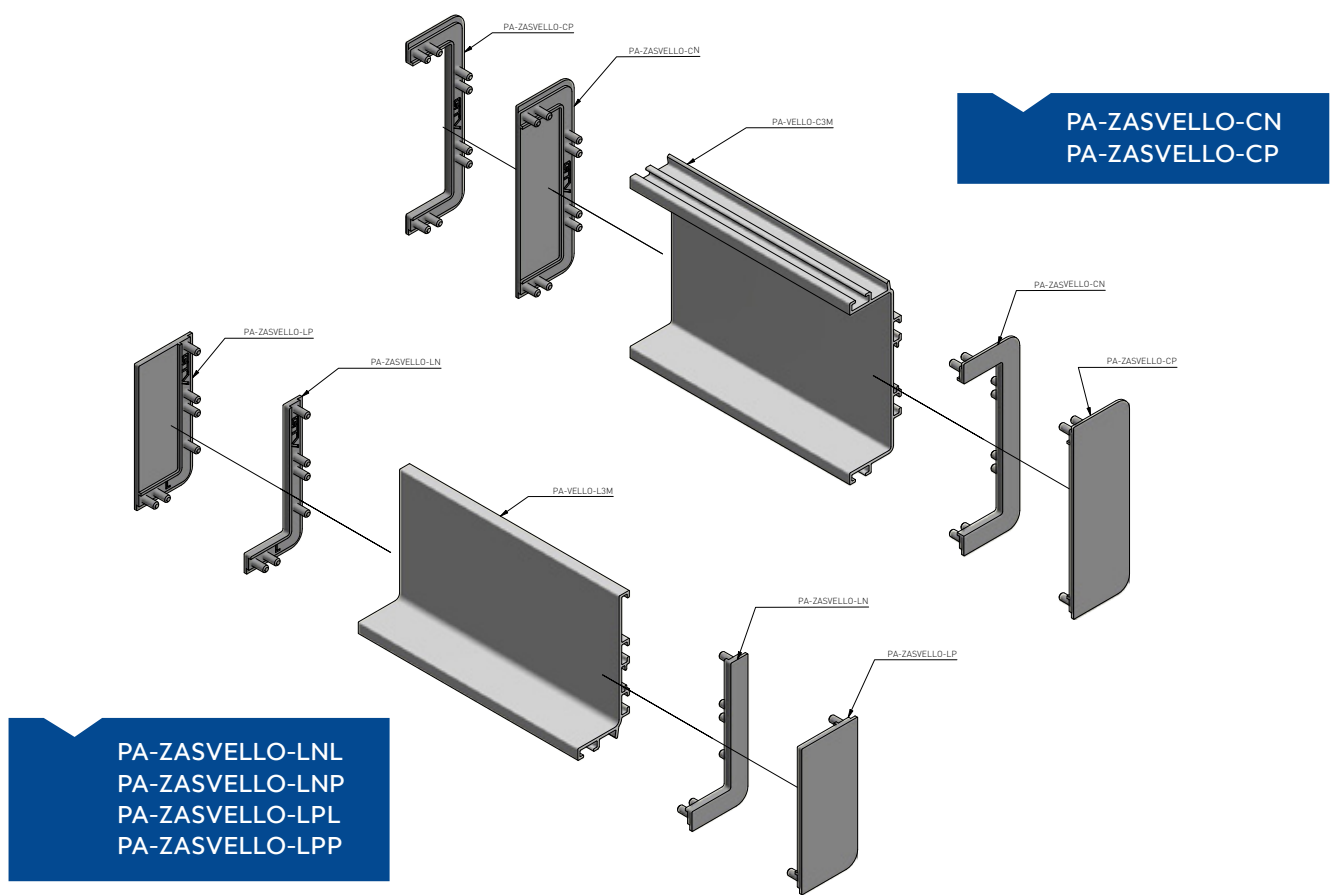


PA-GLAXWN-AL	Rim profile GLAX, silver, 2 meters
PA-GLAXWN3M-05	Rim profile GLAX, silver, 3 meters
PA-GLAXWN3M-20M	Rim profile GLAX, black, 3 meters
PA-GLAXWN3M-10	Rim profile GLAX, white, 3 meters
PA-GLAXWN3M-06	Rim profile GLAX, inox, 3 meters







# Vello system closing





We manufacture the closing caps using 3D printing technology, followed by painting in the same colour as the profile. In the case of the L-profile, we have a right and a left end cap, in a full and an open version. The closing cap for the C-profile is symmetrical, available in a full and open version.

Each type of closing cap is available in four colour versions to match the profile.

### End caps for L profile

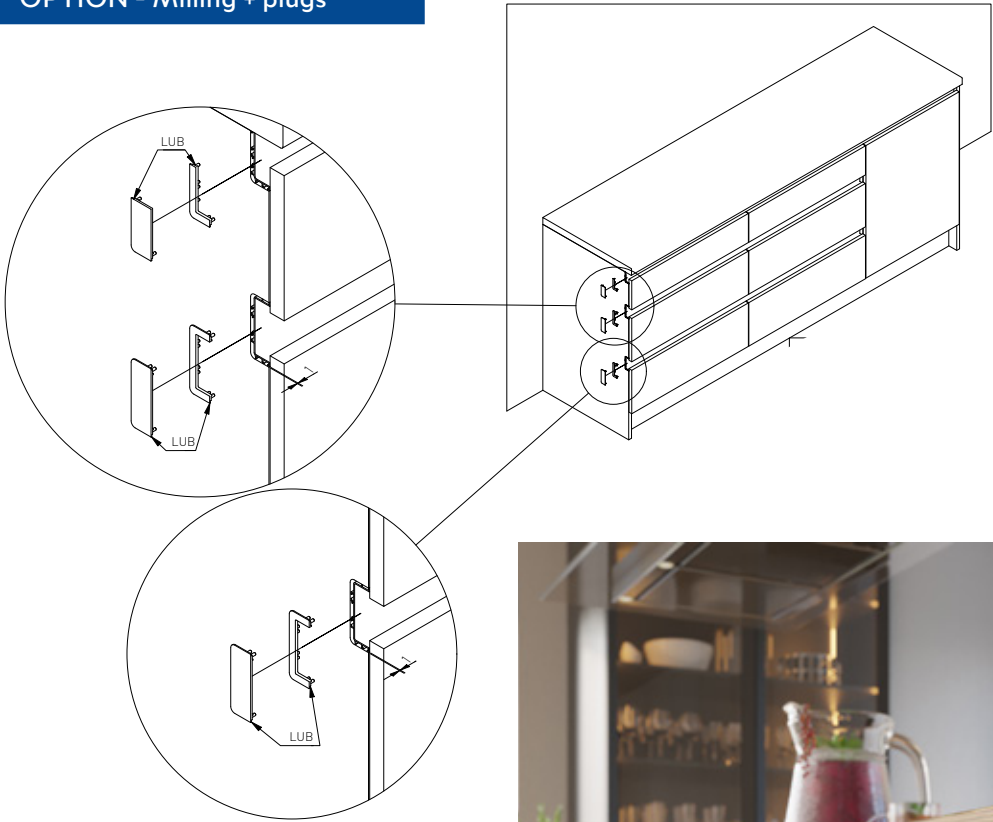
					
aluminium	brushed steel	white	black matt	plastic	10
PA-ZASVELLO-LNL-05	PA-ZASVELLO-LNL-06	PA-ZASVELLO-LNL-10	PA-ZASVELLO-LNL-20M		
PA-ZASVELLO-LNP-05	PA-ZASVELLO-LNP-06	PA-ZASVELLO-LNP-10	PA-ZASVELLO-LNP-20M		
PA-ZASVELLO-LPL-05	PA-ZASVELLO-LPL-06	PA-ZASVELLO-LPL-10	PA-ZASVELLO-LPL-20M		
PA-ZASVELLO-LPP-05	PA-ZASVELLO-LPP-06	PA-ZASVELLO-LPP-10	PA-ZASVELLO-LPP-20M		

### End caps for C profile

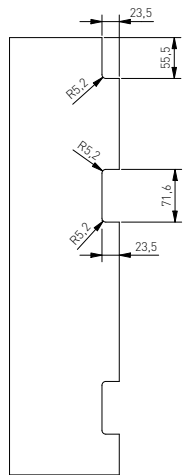
					
aluminium	brushed steel	white	black matt	plastic	10
PA-ZASVELLO-CN-05	PA-ZASVELLO-CN-06	PA-ZASVELLO-CN-10	PA-ZASVELLO-CN-20M		
PA-ZASVELLO-CP-05	PA-ZASVELLO-CP-06	PA-ZASVELLO-CP-10	PA-ZASVELLO-CP-20M		

# Side panel milling to fit caps

## OPTION - Milling + plugs



## Dimensions of milling for the profiles

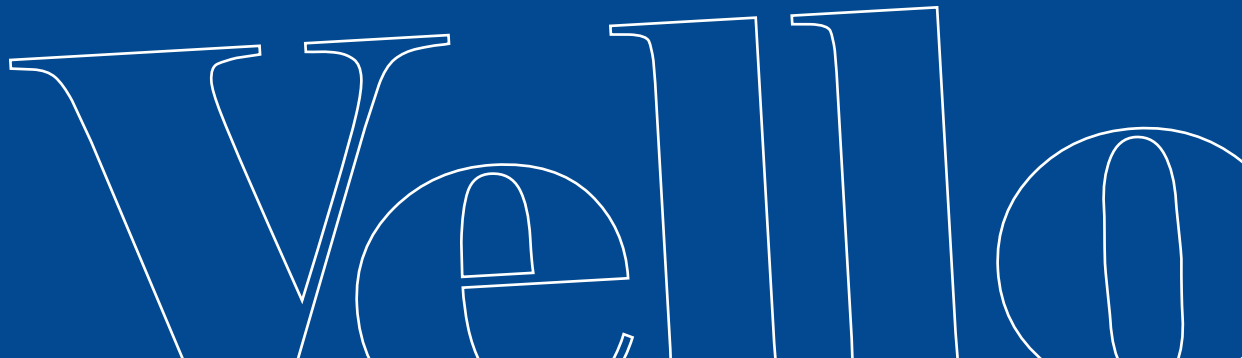




Vello will work well in any kitchen space, large or small. It is perfect for loft and industrial style kitchens, with dark fronts. It will also work amazingly in fashionable grey, from light to anthracite.





A white classic kitchen with a warm wood countertop is also a great place for the Vello system. Its versatility means that there are no limits to it.

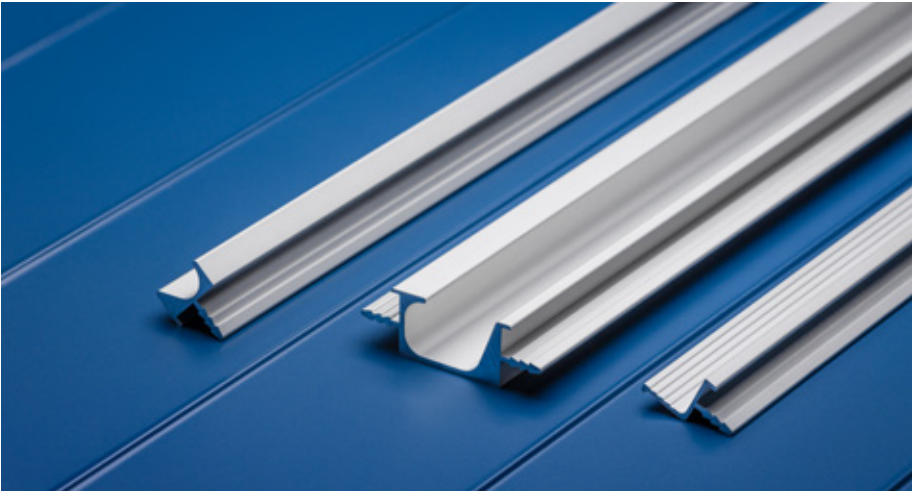
Minimalism in interiors, although it has already taken hold for good, can still surprise us. We can always discover new ways to save space without making it dull. An ascetic interior does not have to mean modest or boring. With Vello and its crown profile it is very easy to create a modern, comfortable and functional interior which stands out with its subtle aesthetics.



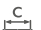


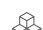
Another, just as novel type of profiles used in kitchens are edge profiles from our offer: U, J and C2. Made from aluminium, available in 3500 m long pieces for cutting to size, they work as perfect discreet handles.

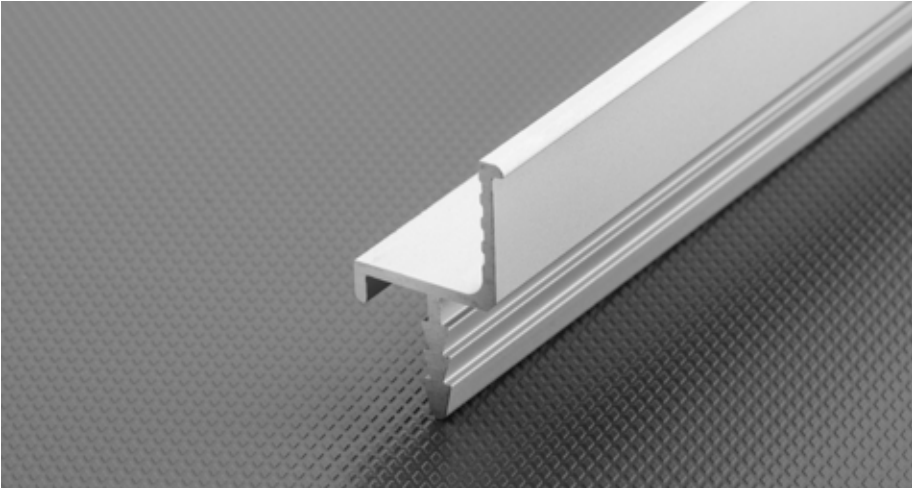
Handle  
PROFIL U

 C mm	 L mm		
cut	3500	aluminium PA-0241-35-50	aluminium






Handle  
PROFIL J

 C mm	 L mm		
cut	3500	aluminium PA-0245-35-50	aluminium



Handle  
PROFIL U

 C mm	 L mm		
cut	3500	aluminium PA-0244-35-50	aluminium





# Vello

**SCAN THE CODE AND SEE**  
what a kitchen with Vello can look like.



**GTV**

ul. Przejazdowa 21  
05-800 Pruszków  
Poland

tel.: + 48 22 44 47 272  
fax: +48 22 444 75 01  
e-mail: [info@gtv.com.pl](mailto:info@gtv.com.pl)



[gtv.com.pl](http://gtv.com.pl)